



### Articolazione degli Ambiti di progettazione unitaria

# G47Na-49Na-51Aa-44Na

sindaco  
**Alessandro Fabbrizzi**

progettisti  
**Giampaolo Romagnoli**  
**Georg Josef Frisch**

indagini geologiche  
**Sandro Ricci**

responsabile del procedimento  
**Elisabetta Lenzi**

consulente  
**Veziro De Lucia**

indagini idrauliche  
**Mario Di Felice**








garante della comunicazione  
**Gemma Lonzi**

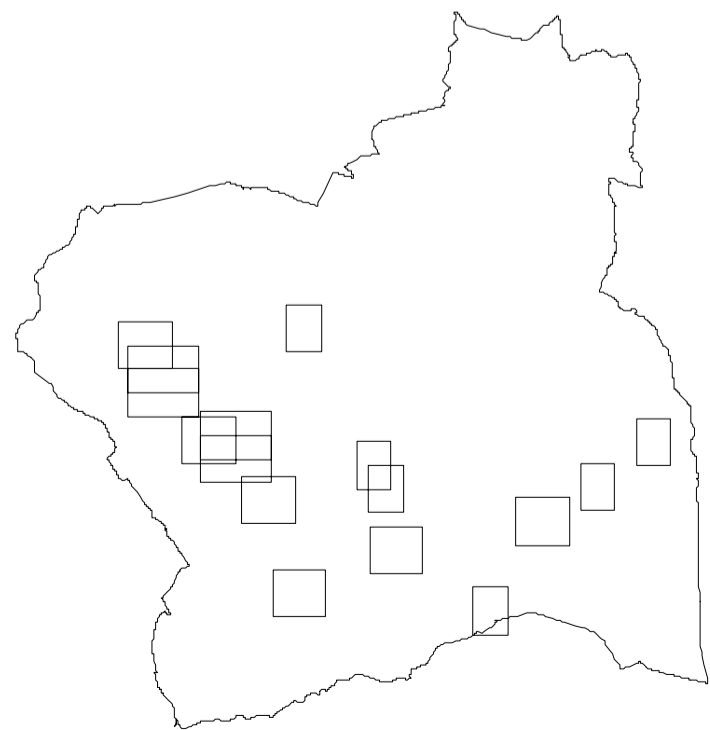
elaborati cartografici  
**Riccardo Rossi**

normativa agronomica  
**Simona Piccini**

## La Menga-Campo Tondello-II Lupo

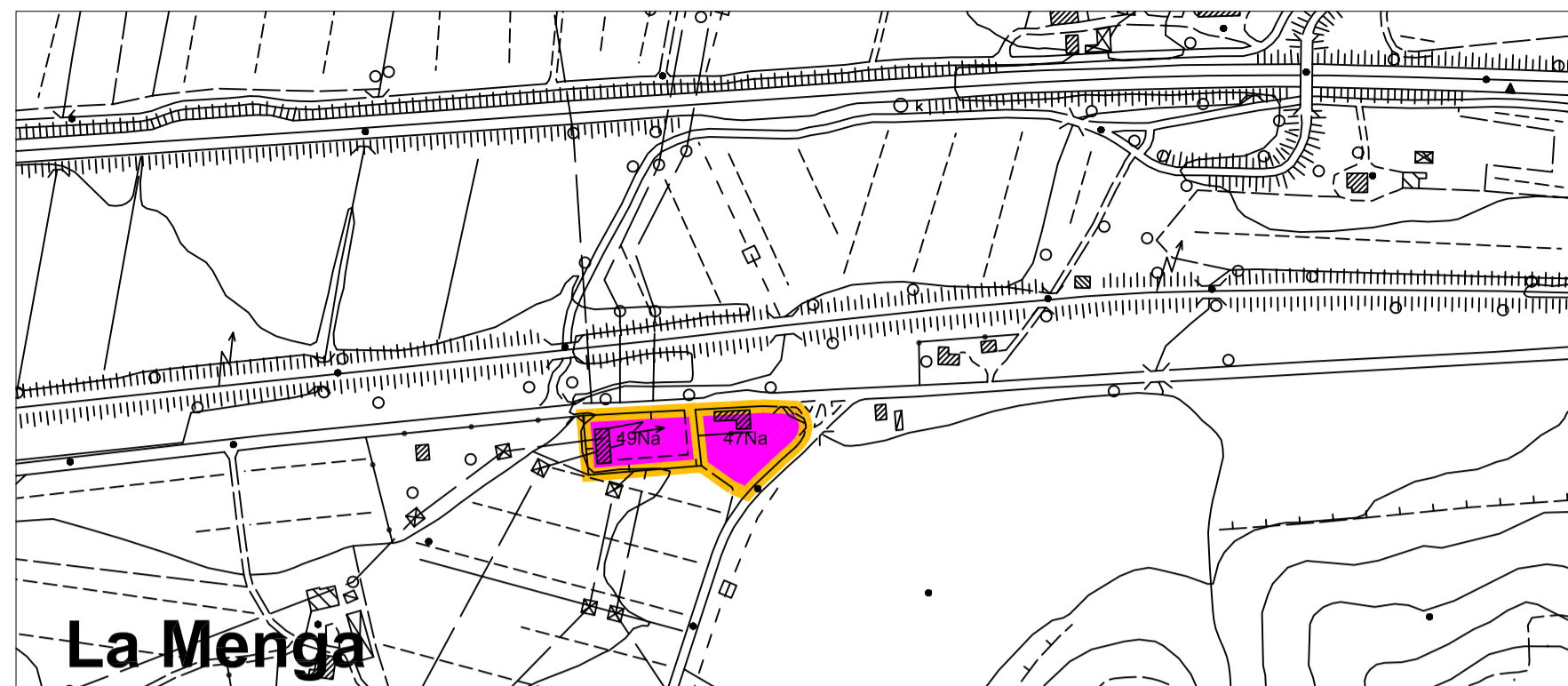
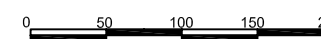
### LEGENDA:

-  Fattibilità senza particolari limitazioni F1
-  Fattibilità con normali vincoli F2g
-  Fattibilità con normali vincoli F2i
-  Fattibilità condizionata F3g
-  Fattibilità condizionata F3i
-  Fattibilità limitata F4g
-  Fattibilità limitata F4i

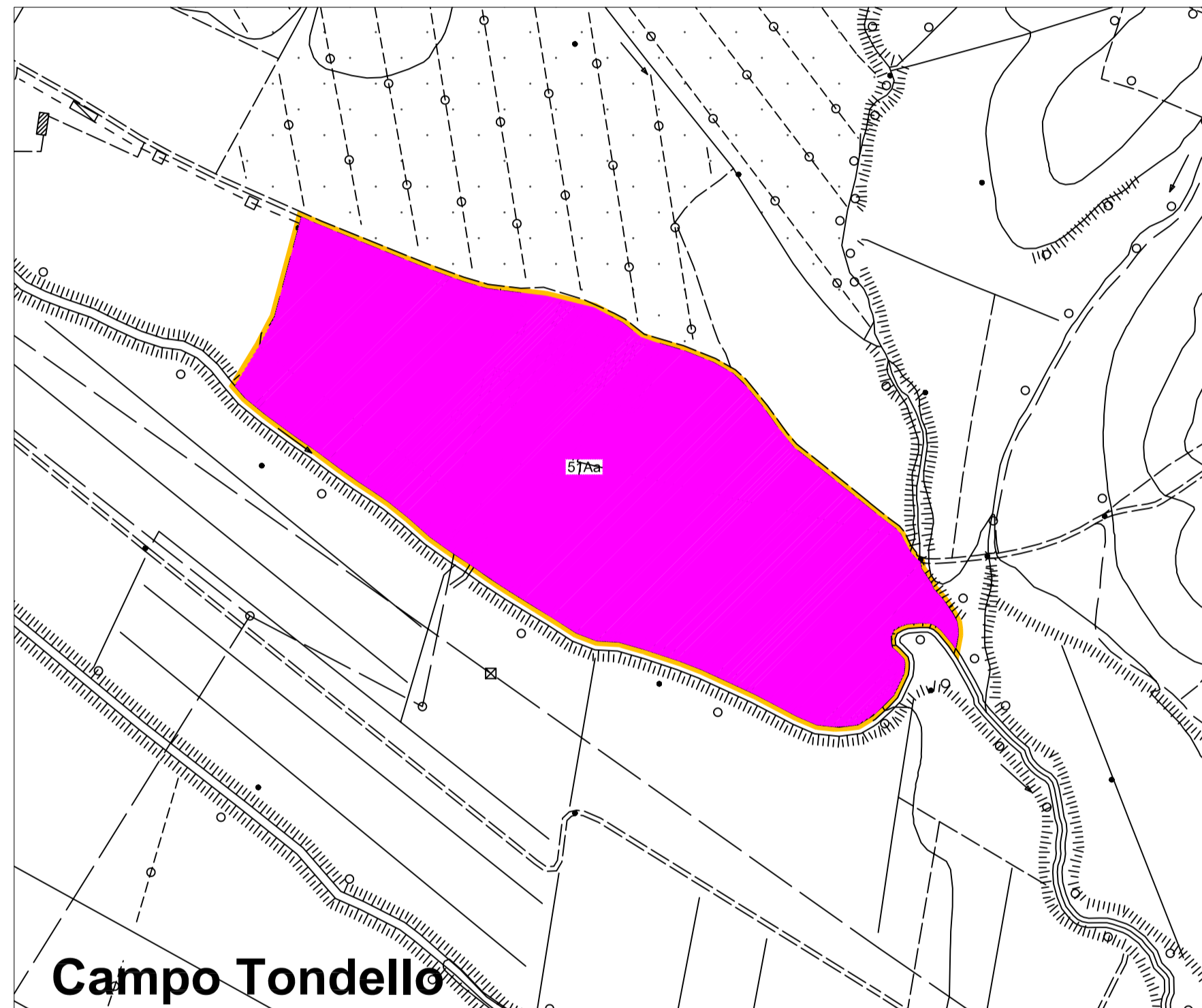


Adozione

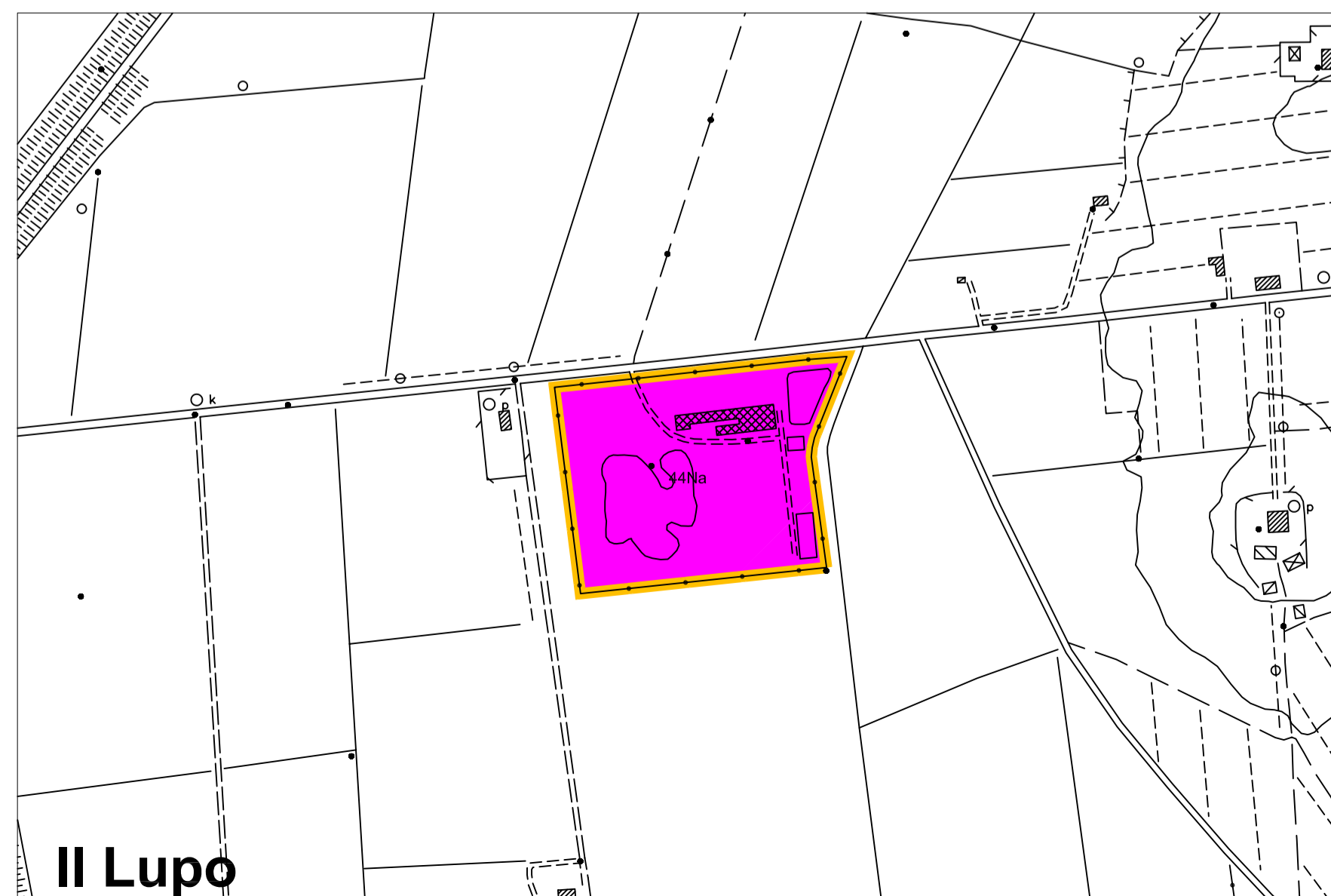
Approvazione



## La Menga



## Campo Tondello



## Il Lupo